

BANK VAN DE NEDERLANDSE ANTILLEN
ECONOMIC KEY FIGURES NETHERLANDS ANTILLES
(millions NAf.)

	1998	1999	2000	2001	2002	2003	2004	2005-I
A. Real sector 1)								
GDP (in billions NAf.)	4,9	4,9	5,0	5,2	5,2	5,4	5,5	5,6
Real GDP (% change)	-3,0%	-1,8%	-2,7%	1,3%	0,3%	1,5%	1,1%	0,4%
Inflation (% annualized change)	1,3%	0,8%	5,0%	1,7%	0,4%	1,9%	1,5%	1,9%
Unemployment rate (%)	16,2%	14,1%	12,9%	14,6%	14,6%	15,3%	15,0%	15,0%
B. Public finances 2)								
Budget balance	-84,8	-53,1	-101,1	3,9	-216,9	-242,7	-341,1	-29,4
Budget balance (% of GDP)	-1,7%	-1,1%	-2,0%	0,1%	-4,2%	-4,5%	-6,2%	-2,1%
Government revenues	1.266,9	1.167,9	1.261,3	1.266,1	1.243,4	1.346,8	1.349,2	367,0
Government expenditures	1.351,7	1.221,0	1.362,4	1.262,2	1.460,3	1.589,5	1.690,3	396,4
Financing	84,8	53,1	101,1	-3,9	216,9	242,7	341,1	29,4
Monetary	-20,4	53,7	20,9	55,3	140,0	105,4	161,3	23,7
Nonmonetary	105,2	-0,6	80,2	-59,2	76,9	137,3	179,8	5,7
Government debt	3.141,0	3.297,6	3.342,8	3.489,4	3.841,7	4.361,5	4.761,7	4.797,2
Domestic debt	2.516,2	2.670,3	2.723,4	2.895,8	3.123,7	3.554,8	3.935,1	4.005,0
Foreign debt	624,8	627,3	619,4	593,6	718,0	806,7	826,6	792,2
Government debt (% of GDP)	63,5%	67,3%	66,7%	67,6%	73,9%	81,2%	86,4%	86,3%
Domestic debt (% of GDP)	50,9%	54,5%	54,4%	56,1%	60,1%	66,2%	71,4%	72,1%
Foreign debt (% of GDP)	12,6%	12,8%	12,4%	11,5%	13,8%	15,0%	15,0%	14,3%
C. Balance of payments 3)								
Current account balance	-245,0	-592,3	-91,0	-377,5	-105,5	12,6	-189,8	21,3
Current account balance (% of GDP)	-5,0%	-12,1%	-1,8%	-7,3%	-2,0%	0,2%	-3,4%	1,5%
Total exports	4.041,6	3.960,2	4.765,3	4.669,2	4.761,7	5.149,1	5.494,9	1.468,4
Total imports	4.286,6	4.552,5	4.856,3	5.046,7	4.867,2	5.136,5	5.684,5	1.447,0
<i>Trade balance</i>	-1.875,3	-1.999,8	-1.764,3	-1.994,2	-1.837,9	-1.794,8	-2.090,6	-544,0
Exports	833,4	835,9	1.210,3	1.142,6	1.030,3	1.220,0	1.431,7	370,1
Imports	2.708,7	2.835,7	2.974,6	3.136,8	2.868,2	3.014,8	3.522,3	914,1
<i>Service balance</i>	1.606,8	1.437,2	1.574,6	1.579,7	1.536,2	1.600,6	1.802,0	553,1
Exports	2.701,0	2.622,1	2.887,9	2.952,4	2.914,3	3.053,8	3.321,7	920,4
Tourism	1.458,1	1.259,1	1.360,7	1.343,9	1.380,1	1.513,5	1.644,7	498,8
Int'l financial and business sector	455,8	453,2	447,3	491,1	483,3	411,0	406,1	98,1
Imports	1.094,2	1.184,9	1.313,4	1.372,7	1.378,1	1.453,2	1.519,7	367,3
<i>Income balance</i>	66,0	-36,6	40,8	35,6	1,2	-12,8	-18,5	-1,6
<i>Current transfers balance</i>	-42,6	6,8	57,9	1,4	195,0	219,6	117,3	13,8
Taxes from int'l fin. and bus. sector	114,7	75,3	81,5	87,4	83,7	121,8	100,0	27,3
Capital and financial account	213,8	548,4	66,1	306,4	13,9	-96,9	34,8	-68,3
<i>Capital transfers</i>	155,6	194,0	53,4	66,6	49,6	46,0	142,0	99,8
<i>Investments</i>	193,6	339,6	-72,7	654,8	86,3	-53,7	-41,1	22,6
Net change in international reserves 4)	-135,4	14,8	85,4	-415,0	-122,0	-89,2	-66,1	-190,7
Net errors and omissions	31,2	43,9	24,9	71,1	91,6	83,5	152,0	47,0

BANK VAN DE NEDERLANDSE ANTILLEN
ECONOMIC KEY FIGURES NETHERLANDS ANTILLES
(millions NAf.)

	1998	1999	2000	2001	2002	2003	2004	2005-I
D. Money, credit and interest rates								
Money supply (M2)	2.698,6	2.891,3	2.955,0	3.380,9	3.776,7	4.092,9	4.509,9	4.747,1
Money supply (% of GDP)	54,6%	59,0%	59,0%	65,5%	72,7%	76,2%	81,8%	85,4%
Change in money supply:	96,6	192,7	63,7	425,9	395,8	316,2	417,0	237,2
Domestic sector (net)	-32,9	212,9	182,0	-9,6	273,8	128,9	275,8	46,6
Central Government	-6,7	-80,0	-29,8	44,9	180,9	83,0	91,5	23,4
Island Governments	-21,5	46,9	13,5	22,8	14,6	35,5	59,7	4,2
Private sector	36,8	236,4	141,2	14,1	91,0	51,9	225,3	39,2
Miscellaneous	-41,5	9,6	57,1	-91,4	-12,7	-41,5	-100,7	-20,2
Foreign sector (net)	129,5	-20,2	-118,3	435,5	122,0	187,3	141,2	190,6
Pledging rate	7,00%	7,00%	7,00%	7,00%	3,50%	2,25%	2,75%	3,00%
Current account overdrafts		10,74%	9,55%	10,48%	10,20%	10,73%	10,39%	10,43%
Government bond (5-years)	7,75%	8,75%	9,00%	9,00%	7,25%	6,90%	6,75%	6,75%
E. International reserves position								
International reserves	777,7	762,9	636,4	1.051,5	1.173,5	1.360,8	1.461,6	1.652,2
Central Bank	623,4	654,2	605,6	677,9	853,0	904,5	1.015,3	1.150,2
Gold	179,8	179,8	138,9	138,9	138,9	237,0	271,7	271,7
Official forex reserves	443,6	474,4	466,7	539,0	714,1	667,5	743,6	878,5
Commercial banks	154,3	108,7	30,8	373,6	320,5	456,3	446,3	502,0
Import coverage (months)	2,0	2,0	1,9	2,1	3,0	2,7	2,5	2,9

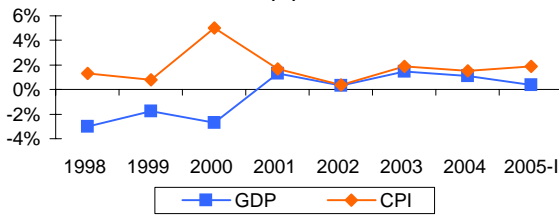
1) GDP figures are compiled by the CBS based on the SNA '93 definitions. The current year is estimated by the BNA. Unemployment rate is compiled from CBS-data and estimates of the BNA.

2) Central government and Curaçao combined (cash basis). Debt: all governments. As of 2001, a more comprehensive definition of debt is used.

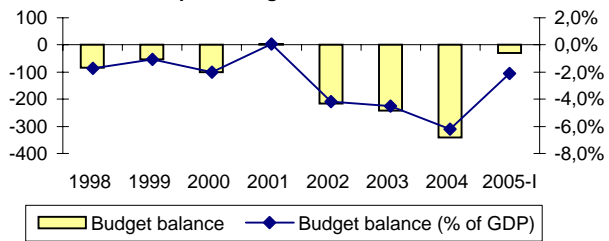
3) Transaction basis

ECONOMIC KEYFIGURES NETHERLANDS ANTILLES

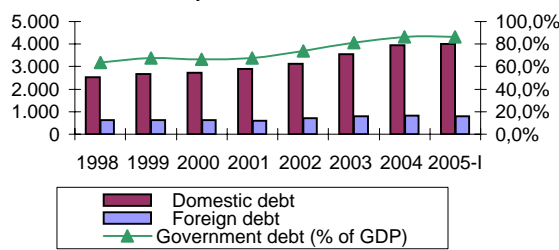
Graph 1. Real GDP and inflation (%)



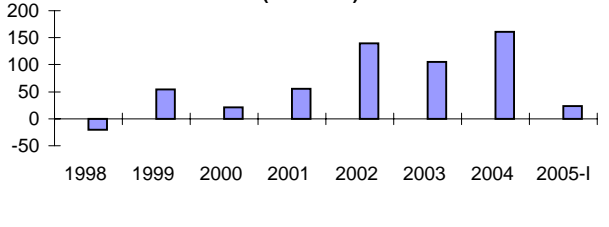
Graph 2. Budget balance Gen.Govt.



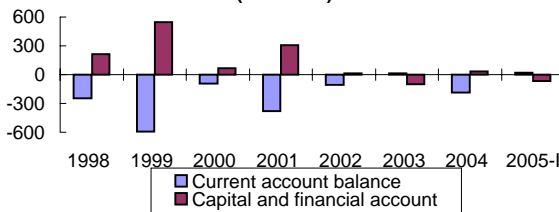
Graph 3. Government debt



Graph 4. Monetary financing (mln. NAf.)



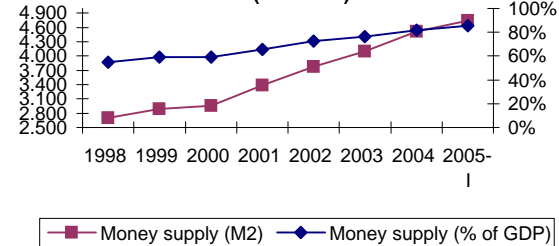
Graph 5. Balance of payments (mln. NAf.)



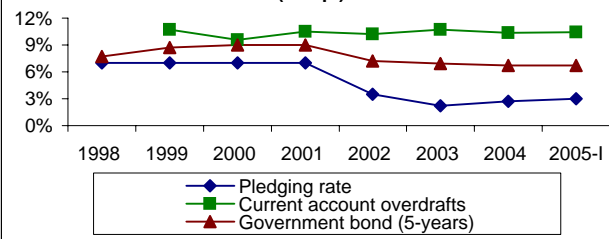
Graph 6. Export and import of goods & services (mln. NAf.)



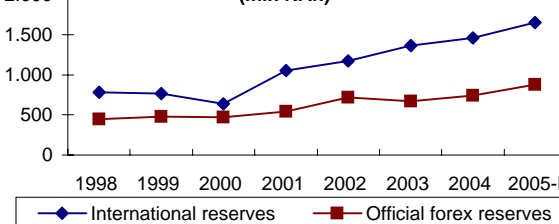
Graph 7. Money supply (mln. NAf.)



Graph 8. Interest rates (% e.p.)



Graph 9. Reserves position (mln NAf.)



Graph 10. Import coverage

