

BANK VAN DE NEDERLANDSE ANTILLEN
ECONOMIC KEY FIGURES NETHERLANDS ANTILLES
(millions NAf.)

	2002	2003	2004	2005	2006	2007	2008	2009	2010-I
A. Real sector 1)									
GDP (in billions NAf.)	5.3	5.4	5.6	5.8	6.1	6.6	7.1	7.2	7.2
Real GDP (% change)	0.4%	1.7%	1.2%	1.1%	2.3%	3.8%	2.0%	-0.2%	0.8%
Inflation (% annualized change)	0.4%	1.6%	1.6%	3.7%	2.8%	2.8%	6.3%	1.6%	1.7%
Unemployment rate (%)	14.6%	15.3%	15.1%	16.2%	13.2%	11.5%	9.7%	10.0%	10.0%
B. Public finances 2)									
Budget balance	-216.9	-242.8	-341.1	-154.5	-189.6	-170.4	-172.0	761.8	177.1
Budget balance (% of GDP)	-4.1%	-4.5%	-6.1%	-2.6%	-3.1%	-2.6%	-2.4%	10.6%	9.8%
Government revenues	1,250.3	1,346.7	1,349.1	1,616.2	1,485.6	1,547.3	1,740.8	2,767.3	682.0
Government expenditures	1,467.2	1,589.5	1,690.2	1,770.7	1,675.2	1,717.7	1,912.8	2,005.5	504.9
Financing	216.9	242.8	341.1	154.5	189.6	170.4	172.0	-761.8	-177.1
Monetary	140.0	105.4	161.3	-35.6	-92.7	77.7	89.5	-460.8	6.8
Nonmonetary	76.9	137.4	179.8	190.1	282.3	92.7	82.5	-301.0	-183.9
Government debt	3,847.5	4,416.2	4,712.0	4,800.5	5,112.2	5,519.4	5,803.3	5,284.7	4,988.1
Domestic debt	3,124.6	3,607.4	3,984.8	4,145.0	4,369.9	4,698.6	4,998.1	4,434.9	4,195.6
Foreign debt	722.9	808.8	727.2	655.5	742.3	820.8	805.2	849.8	792.5
Government debt (% of GDP)	73.2%	81.4%	84.5%	82.2%	83.3%	84.0%	82.0%	73.6%	69.0%
Domestic debt (% of GDP)	59.5%	66.5%	71.5%	70.9%	71.2%	71.5%	70.6%	61.8%	58.0%
Foreign debt (% of GDP)	13.8%	14.9%	13.0%	11.2%	12.1%	12.5%	11.4%	11.8%	11.0%
C. Balance of payments 3)									
Current account balance	-68.1	4.3	-157.4	-189.3	-465.5	-1,062.9	-1,561.0	-669.3	-34.4
Current account balance (% of GDP)	-1.3%	0.1%	-2.8%	-3.2%	-7.6%	-16.2%	-22.1%	-9.3%	-1.9%
Total exports	4,515.0	4,668.7	4,892.4	5,377.9	5,641.6	5,811.2	6,465.1	6,773.0	1,825.0
Total imports	4,583.1	4,664.3	5,049.7	5,567.2	6,107.1	6,874.1	8,107.1	7,442.3	1,859.4
Trade balance	-1,840.5	-1,866.4	-2,151.0	-2,402.4	-2,711.2	-3,351.6	-3,563.2	-3,216.4	-828.6
Exports	829.3	768.6	933.1	1,088.4	1,243.5	1,210.8	1,948.3	1,450.0	375.5
Imports	2,669.8	2,635.0	3,084.1	3,490.7	3,954.7	4,562.4	5,511.5	4,666.5	1,204.2
Service balance	1,575.1	1,670.0	1,925.3	2,042.6	2,206.5	2,329.0	2,118.2	1,979.1	598.2
Exports	2,865.3	3,028.4	3,222.4	3,356.4	3,564.1	3,756.4	3,678.1	3,643.4	1,001.4
Tourism	1,381.7	1,530.8	1,676.1	1,771.2	1,824.6	1,966.0	2,081.2	1,939.6	604.2
Int'l financial and business sector	485.3	409.9	434.8	396.9	405.2	353.6	302.9	313.0	65.3
Imports	1,290.2	1,358.4	1,297.1	1,313.8	1,357.5	1,427.4	1,559.8	1,664.4	403.2
Income balance	-0.5	-12.5	-29.6	-27.0	-1.9	5.2	-74.1	-172.7	-9.1
Current transfers balance	197.8	213.2	97.9	197.5	41.1	-45.6	-42.0	740.8	205.1
Taxes from int'l fin. and bus. sector	83.7	121.8	100.1	291.5	127.2	66.1	109.7	93.2	41.2
Capital and financial account	130.6	-12.4	108.4	132.6	401.7	923.7	1,458.9	535.2	-8.4
Capital transfers	49.7	46.8	142.1	171.2	179.4	218.7	244.9	200.7	88.9
Investments	202.9	30.0	32.4	93.9	306.5	982.3	1,585.6	873.7	184.1
Net change in international reserves 4)	-122.0	-89.2	-66.1	-132.5	-84.2	-277.3	-371.6	-539.2	-281.9
Net errors and omissions	-62.5	8.1	49.0	56.7	63.8	139.2	102.1	134.0	42.7

BANK VAN DE NEDERLANDSE ANTILLEN
ECONOMIC KEY FIGURES NETHERLANDS ANTILLES
(millions NAf.)

	2002	2003	2004	2005	2006	2007	2008	2009	2010-I
D. Money, credit and interest rates									
Money supply (M2)	3,776.7	4,092.9	4,509.9	4,933.4	5,425.1	6,083.4	6,857.8	7,458.2	7,651.0
Money supply (% of GDP)	71.9%	75.4%	80.9%	84.4%	88.3%	92.5%	96.9%	103.9%	105.8%
Change in money supply:	395.8	316.2	417.0	423.5	491.7	658.3	774.4	600.4	192.8
Domestic sector (net)	273.8	128.9	275.8	257.2	347.2	309.1	295.4	-31.3	-89.1
Central Government	180.9	83.0	91.5	34.0	-39.4	36.4	33.5	-190.2	65.7
Island Governments	14.6	35.5	59.7	-33.4	-12.8	22.2	40.3	-289.8	-78.0
Private sector	91.0	51.9	225.3	390.6	608.0	474.6	558.5	542.6	4.1
Miscellaneous	-12.7	-41.5	-100.7	-134.0	-208.6	-224.1	-336.9	-93.9	-80.9
Foreign sector (net)	122.0	187.3	141.2	166.3	144.5	349.2	479.0	631.7	281.9
Pledging rate	3.50%	2.25%	2.75%	4.50%	5.50%	5.00%	1.00%	1.00%	1.00%
Current account overdrafts	10.20%	10.73%	10.39%	9.61%	10.23%	8.89%	8.25%	7.08%	7.50%
Government bond (5-years)	7.25%	6.90%	6.75%	6.25%	7.50%	7.19%	5.85%	4.30%	3.25%
E. International reserves position									
International reserves	1,173.5	1,360.8	1,461.6	1,627.9	1,772.4	2,121.6	2,600.6	3,232.3	3,514.2
Central Bank	853.0	904.5	1,015.3	1,117.9	1,251.9	1,620.6	2,010.7	2,188.9	2,196.4
Gold	138.9	237.0	271.7	305.5	365.8	437.6	544.9	637.5	637.5
Official forex reserves	714.1	667.5	743.6	812.4	886.1	1,183.0	1,465.8	1,551.4	1,558.9
Commercial banks	320.5	456.3	446.3	510.0	520.5	501.0	589.9	1,043.4	1,317.8
Import coverage (months)	3.0	3.2	2.7	3.0	2.7	2.7	3.1	4.1	4.0

1) GDP figures are compiled by the CBS based on the SNA '93 definitions.

Unemployment rate is compiled from CBS-data and estimates of the BNA..

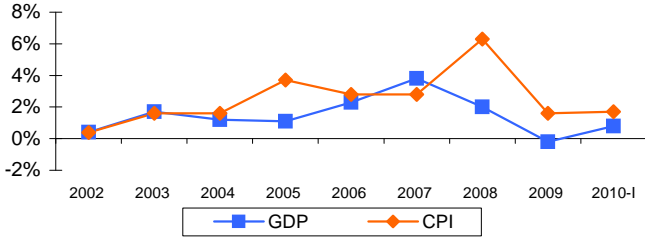
2) Central government and Curaçao combined (cash basis). Debt: all governments.

3) Transaction basis

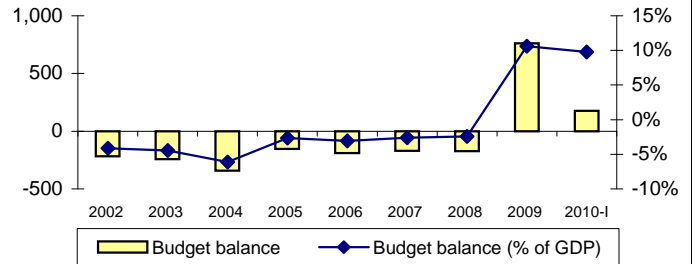
4) -sign denotes an increase

ECONOMIC KEYFIGURES NETHERLANDS ANTILLES

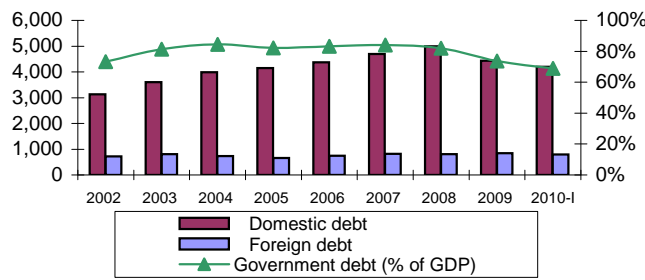
Graph 1. Real GDP and inflation (%)



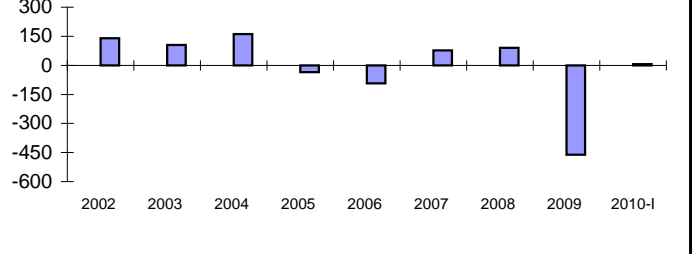
Graph 2. Budget balance Gen.Govt.



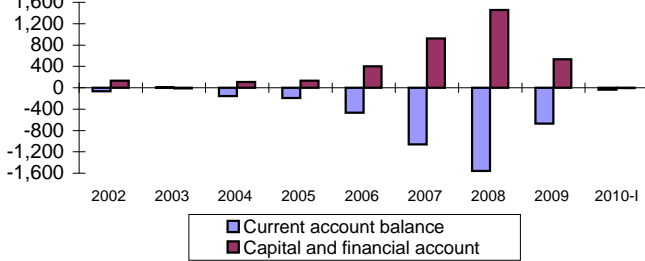
Graph 3. Government debt



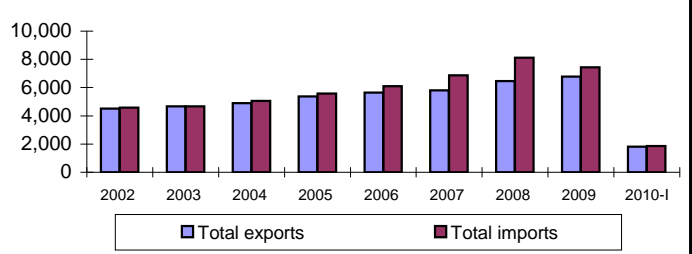
Graph 4. Monetary financing (mln. Naf.)



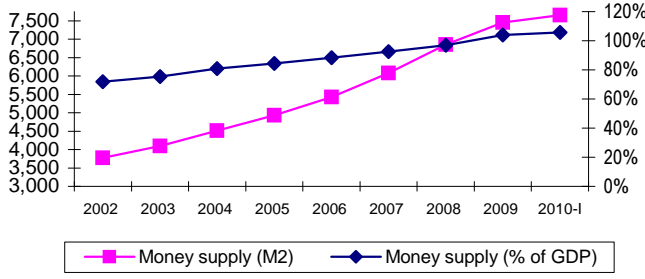
Graph 5. Balance of payments (mln. Naf.)



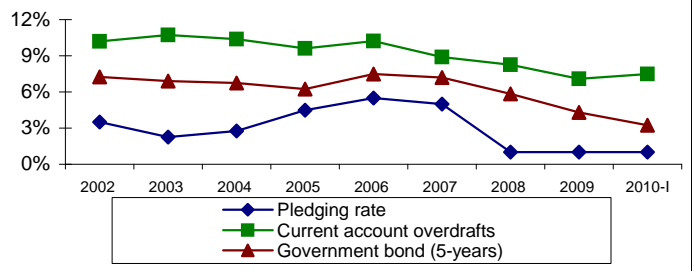
Graph 6. Export and import of goods & services (mln. Naf.)



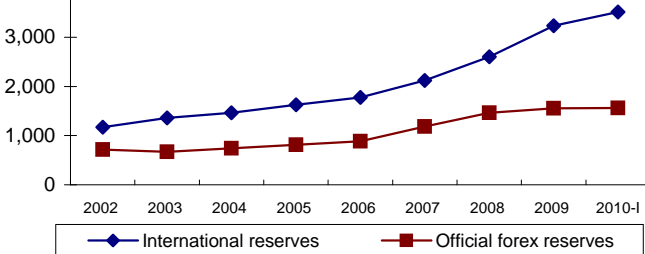
Graph 7. Money supply (mln. Naf.)



Graph 8. Interest rates (% e.p.)



Graph 9. Reserves position (mln Naf.)



Graph 10. Import coverage

