

CENTRALE BANK VAN CURAÇAO EN SINT MAARTEN
ECONOMIC KEY FIGURES NETHERLANDS ANTILLES
(millions NAf.)

	2003	2004	2005	2006	2007	2008	2009	2010-III
A. Real sector 1)								
GDP (in billions NAf.)	5.4	5.6	5.8	6.2	6.5	7.1	7.1	7.3
Real GDP (% change)	1.7%	1.2%	1.1%	2.1%	3.2%	2.4%	-0.5%	0.0%
Inflation (% annualized change)	1.6%	1.6%	3.7%	2.8%	2.8%	6.3%	1.6%	2.7%
Unemployment rate (%)	15.3%	15.1%	16.2%	13.2%	11.5%	9.7%	10.0%	10.0%
B. Public finances 2)								
Budget balance	-242.8	-341.1	-154.5	-189.6	-170.4	-172.0	761.8	798.0
Budget balance (% of GDP)	-4.5%	-6.1%	-2.6%	-3.1%	-2.6%	-2.4%	10.7%	14.5%
Government revenues	1,346.7	1,349.1	1,616.2	1,485.6	1,547.3	1,740.8	2,767.3	2,402.6
Government expenditures	1,589.5	1,690.2	1,770.7	1,675.2	1,717.7	1,912.8	2,005.5	1,604.7
Financing	242.8	341.1	154.5	189.6	170.4	172.0	-761.8	-798.0
Monetary	105.4	161.3	-35.6	-92.7	77.7	89.5	-460.8	-277.8
Nonmonetary	137.4	179.8	190.1	282.3	92.7	82.5	-301.0	-520.2
Government debt	4,416.2	4,712.0	4,800.5	5,112.2	5,519.4	5,803.3	5,284.7	4,529.6
Domestic debt	3,607.4	3,984.8	4,145.0	4,369.9	4,698.6	4,998.1	4,434.9	3,832.4
Foreign debt	808.8	727.2	655.5	742.3	820.8	805.2	849.8	697.2
Government debt (% of GDP)	81.4%	84.5%	82.2%	83.1%	84.8%	82.2%	74.0%	61.9%
Domestic debt (% of GDP)	66.5%	71.5%	70.9%	71.0%	72.2%	70.8%	62.1%	52.4%
Foreign debt (% of GDP)	14.9%	13.0%	11.2%	12.1%	12.6%	11.4%	11.9%	9.5%
C. Balance of payments 3)								
Current account balance	4.3	-157.4	-189.3	-361.6	-1,007.8	-1,513.9	-608.6	-898.1
Current account balance (% of GDP)	0.1%	-2.8%	-3.2%	-5.9%	-15.5%	-21.4%	-8.5%	-16.4%
Total exports	4,668.7	4,892.4	5,377.9	5,745.5	5,866.3	6,593.2	6,833.7	4,719.6
Total imports	4,664.3	5,049.7	5,567.2	6,107.1	6,874.1	8,107.1	7,442.3	5,617.7
Trade balance	-1,866.4	-2,151.0	-2,402.4	-2,711.2	-3,351.6	-3,563.2	-3,216.4	-2,569.0
Exports	768.6	933.1	1,088.4	1,243.5	1,210.8	1,948.3	1,450.0	1,043.0
Imports	2,635.0	3,084.1	3,490.7	3,954.7	4,562.4	5,511.5	4,666.5	3,612.1
Service balance	1,670.0	1,925.3	2,042.6	2,206.5	2,329.0	2,118.2	1,979.1	1,426.8
Exports	3,028.4	3,222.4	3,356.4	3,564.1	3,756.4	3,678.1	3,643.4	2,629.0
Tourism	1,530.8	1,676.1	1,771.2	1,824.6	1,966.0	2,081.2	1,939.6	1,523.6
Int'l financial and business sector	409.9	434.8	396.9	405.2	353.6	302.9	313.0	194.8
Imports	1,358.4	1,297.1	1,313.8	1,357.5	1,427.4	1,559.8	1,664.4	1,202.2
Income balance	-12.5	-29.6	-27.0	-1.9	5.2	-74.1	-172.7	-70.2
Current transfers balance	213.2	97.9	197.5	145.0	9.5	5.1	801.5	314.3
Taxes from int'l fin. and bus. sector	121.8	100.1	291.5	231.1	121.2	156.8	153.9	72.1
Capital and financial account	-12.4	108.4	132.6	297.8	868.6	1,411.9	474.5	779.9
Capital transfers	46.8	142.1	171.2	179.4	218.7	244.9	200.7	101.1
Investments	30.0	32.4	93.9	202.6	927.2	1,538.6	813.0	1,108.7
Net change in international reserves 4)	-89.2	-66.1	-132.5	-84.2	-277.3	-371.6	-539.2	-430.4
Net errors and omissions	8.1	49.0	56.7	63.8	139.2	102.0	134.0	118.2

CENTRALE BANK VAN CURAÇAO EN SINT MAARTEN
ECONOMIC KEY FIGURES NETHERLANDS ANTILLES
(millions NAf.)

	2003	2004	2005	2006	2007	2008	2009	2010-III
D. Money, credit and interest rates								
Money supply (M2)	4,092.9	4,509.9	4,933.4	5,425.1	6,083.4	6,857.8	7,458.2	7,815.3
Money supply (% of GDP)	75.4%	80.9%	84.4%	88.2%	93.5%	97.1%	104.4%	106.8%
Change in money supply:	316.2	417.0	423.5	491.7	658.3	774.4	600.4	357.1
Domestic sector (net)	128.9	275.8	257.2	347.2	309.1	295.4	-31.3	-72.9
Central Government	83.0	91.5	34.0	-39.4	36.4	33.5	-190.2	-232.4
Island Governments	35.5	59.7	-33.4	-12.8	22.2	40.3	-289.8	-124.1
Private sector	51.9	225.3	390.6	608.0	474.6	558.5	542.6	289.7
Miscellaneous	-41.5	-100.7	-134.0	-208.6	-224.1	-336.9	-93.9	-6.1
Foreign sector (net)	187.3	141.2	166.3	144.5	349.2	479.0	631.7	430.0
Pledging rate	2.25%	2.75%	4.50%	5.50%	5.00%	1.00%	1.00%	1.00%
Current account overdrafts	10.73%	10.39%	9.61%	10.23%	8.89%	8.25%	7.08%	7.46%
Government bond (5-years)	6.90%	6.75%	6.25%	7.50%	7.19%	5.85%	4.30%	3.25%
E. International reserves position								
International reserves	1,360.8	1,461.6	1,627.9	1,772.4	2,121.6	2,600.6	3,232.3	3,662.3
Central Bank	904.5	1,015.3	1,117.9	1,251.9	1,620.6	2,010.7	2,188.9	2,585.6
Gold	237.0	271.7	305.5	365.8	437.6	544.9	637.5	637.1
Official forex reserves	667.5	743.6	812.4	886.1	1,183.0	1,465.8	1,551.4	1,948.5
Commercial banks	456.3	446.3	510.0	520.5	501.0	589.9	1,043.4	1,076.7
Import coverage (months)	3.2	2.7	3.0	2.7	2.7	3.1	4.1	3.9

1) GDP figures are compiled by the CBS based on the SNA '93 definitions; 2010 figure is estimated by the CBCS.

Unemployment rate is compiled from CBS-data and estimates of the CBCS.

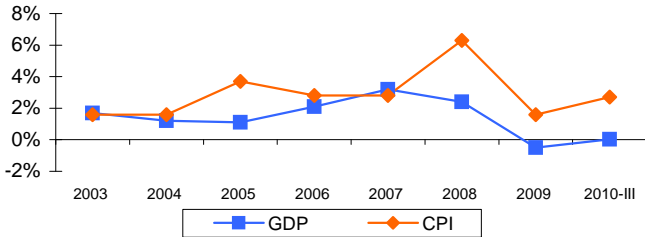
2) Central government and Curaçao combined (cash basis). Debt: all governments.

3) Transaction basis

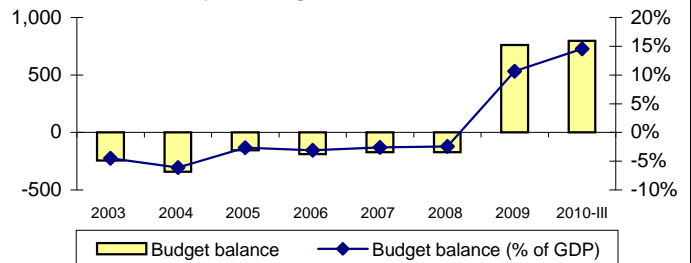
4) -sign denotes an increase

ECONOMIC KEYFIGURES NETHERLANDS ANTILLES

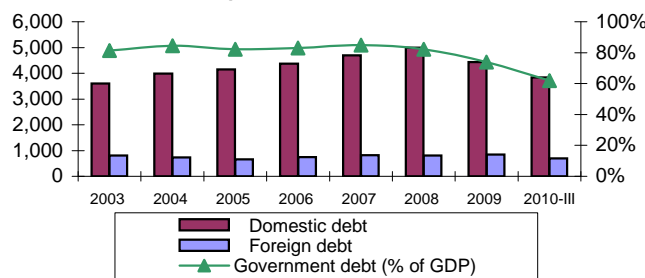
Graph 1. Real GDP and inflation (%)



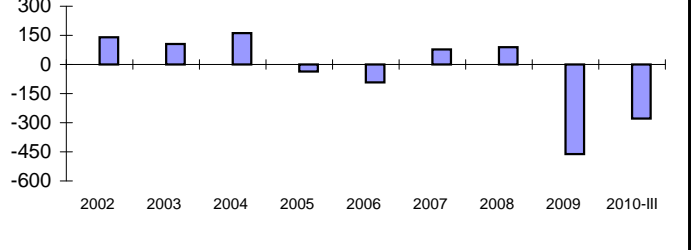
Graph 2. Budget balance Gen.Govt.



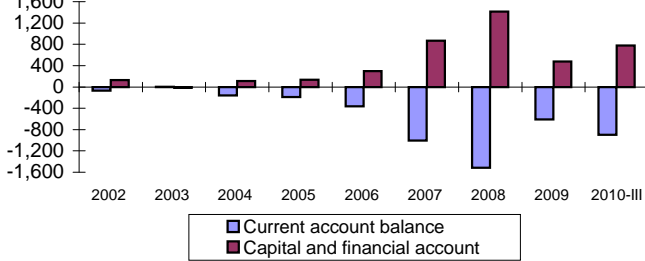
Graph 3. Government debt



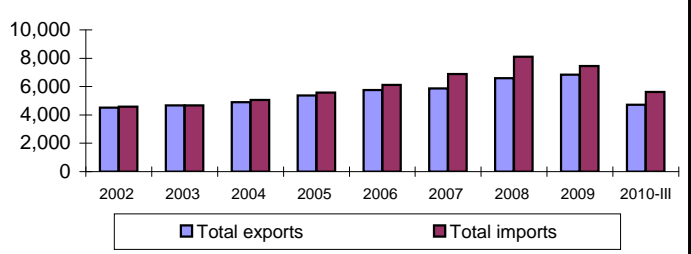
Graph 4. Monetary financing (mln. Naf.)



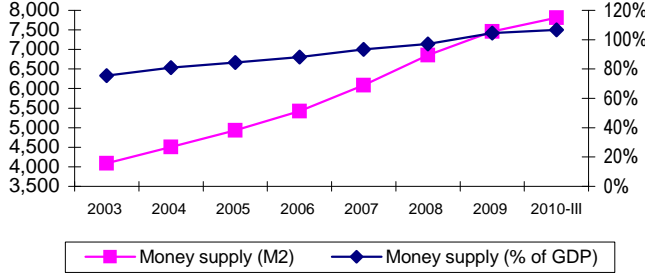
Graph 5. Balance of payments (mln. Naf.)



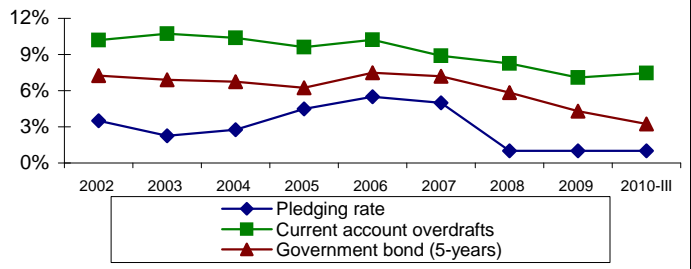
Graph 6. Export and import of goods & services (mln. Naf.)



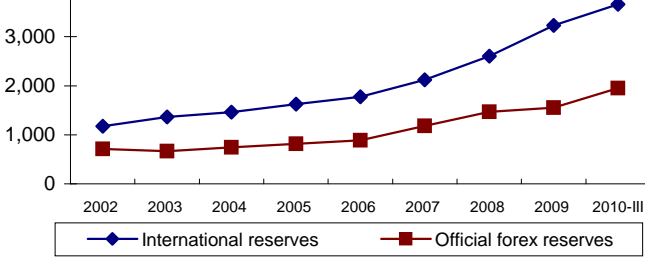
Graph 7. Money supply (mln. Naf.)



Graph 8. Interest rates (% e.p.)



Graph 9. Reserves position (mln Naf.)



Graph 10. Import coverage

